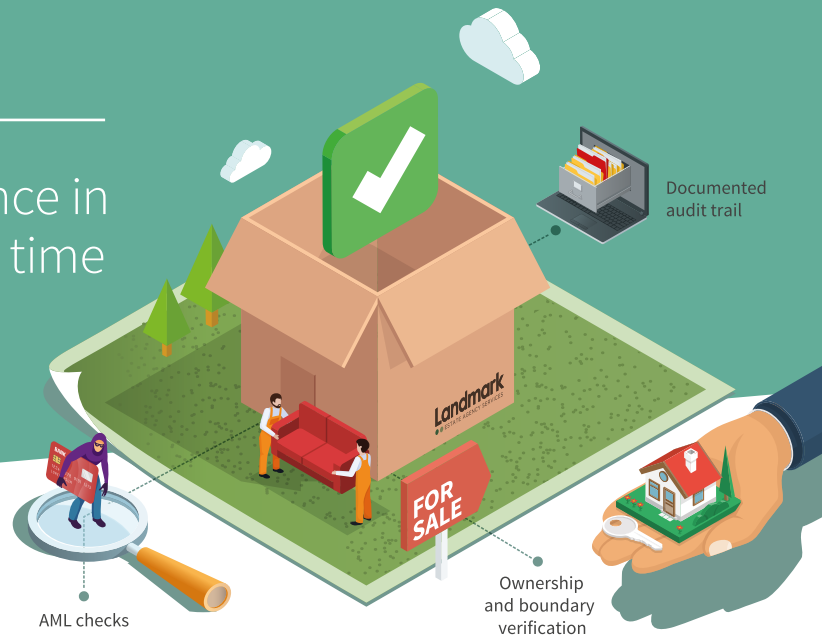


Integrated Compliance

● LANDMARK INFORMATION

Complete your client due diligence in seconds and rededicate branch time to revenue generating activities



Landmark integrate AML checks and land ownership verification directly into your existing management systems. No logging in and out of third party systems, just one seamless process.

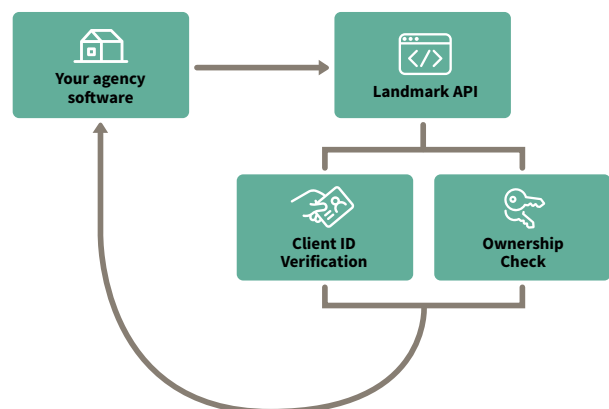
How it works

- Complete your client onboarding capturing key information about your client
- Electronically interrogate your client data to assess the risk posed to your business
- Without any re-keying, pass key client data through our API to confirm ownership and ID verification delivered in real time
- Reduce manual interventions with 95% pass rates

Let your branches get back to selling

Improve efficiency and accuracy with an integrated AML solution, enabling front line staff to focus on the business of selling houses.

For over 25 years Landmark has been at the forefront of product and data services to the UK property market.



Our pioneering technology, data, reports and expert team enable thousands of successful property transactions every day, with products like Metropix, Compliance in a Box, Promap, Q-Mobile, and environmental risk reports. We also developed and continue to maintain the EPC Register.

Landmark has the expertise and development experience to design and deliver integrated solutions to ensure your business is compliant. With the potential for five or six figure fines for non-compliance, can you afford not to get in touch?



Call **01524 220013**
email **eas@landmark.co.uk**